

TemPower2 Air Circuit Breaker AR6 5000A - 6300A

The product range of the world's smallest ACBs, *TemPower2* broadens with new 5000A and 6300A models

■ Appearance



■ Features

Max. rated current: 6300A

A max. rated current of 6300A is achieved by suppressing the temperature rise of contacts and terminals by means of a "DoubleBreak" line side scheme and a pressure-valve implemented efficient air convection.

Rated breaking capacity: 135 kA

A rated breaking capacity of as high as 135 kA at AC440V is achieved for high fault type.

Rated short-time current: 135 kA

The rated short-time current is also 135 kA for 1 sec., thereby enabling selectivity coordination in any fault current for high fault type.

Neutral pole current carrying capacity: 6300A

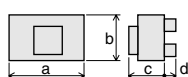
The rated current carrying capacity of the neutral pole is the same as that of voltage poles with 6300A, providing protection against a temperature rise due to harmonic components flowing through the pole.

Mechanical endurance: 5000 open/close cycles

A high mechanical endurance is achieved. The new models have undergone 5000-operation cycle test that is much more stringent than IEC 1500-cycle test, and passed the test, which proves a high reliability of the models.

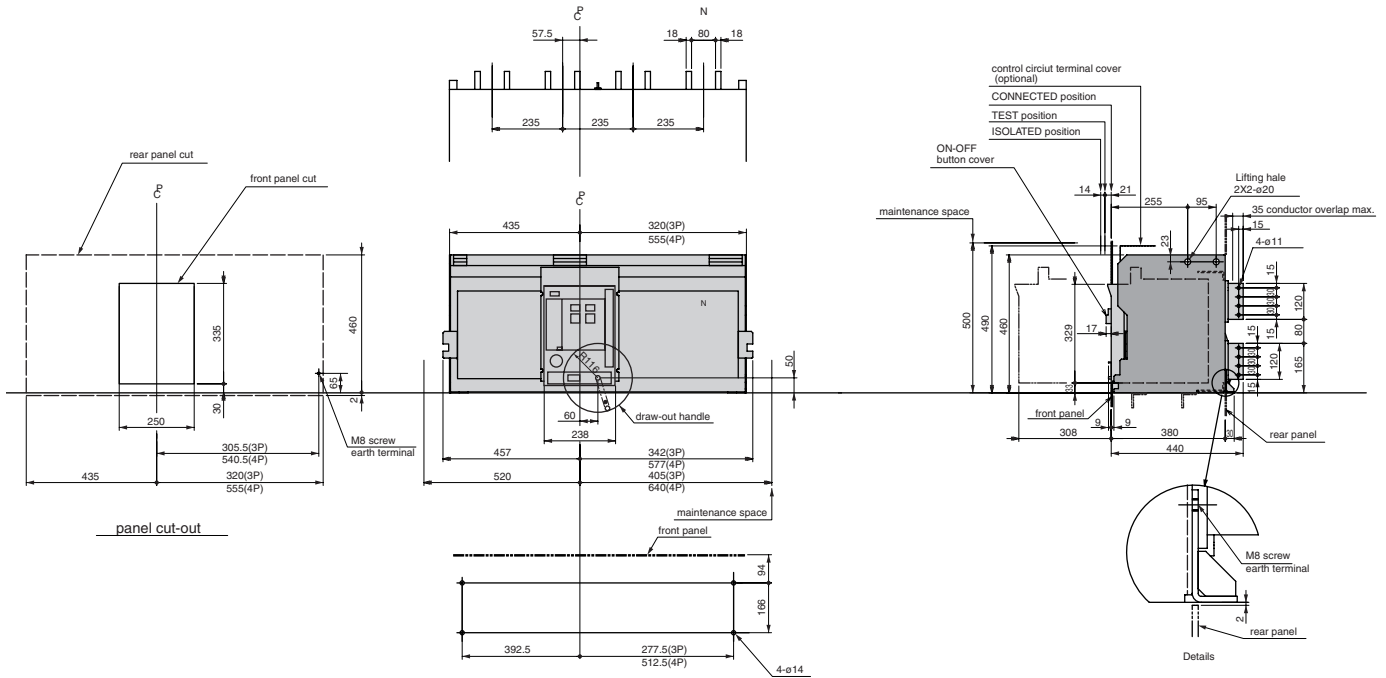
■ Retings and Specifications

TYPE	Standard type 5000A		Standard type 6300A		High fault type 6300A	
	AR650S		AR663S		AR663H	
AMPERE RATING (A)	5000		6300		6300	
RATED CURRENT (max) (A)	IEC	5000	6300		6300	
	JIS	5000	6300		6300	
	Marine	5000	6300		6300	
NEUTRAL POLE AMPERES FRAME (A)	5000		6300		6300	
NUMBER OF POLES	3	4	3	4	3	4
AC RATED INSULATION VOLTAGE [U_i] (V.50/60Hz)	1000		1000		1000	
■ AC RATED BREAKING CAPACITY [kA sym rms] / MAKING CAPACITY [kA peak]						
	IEC60947-2	AC 690V	85/187		85/187	
JIS C 8201-2-1	440V	120/264		120/264		
[$I_{cs} = I_{cu}$]						
NK	AC 690V	85/201	85/201		85/201	
	450V	120/287	120/287		138/322	
RATED SHORT TIME WITHSTAND CURRENT [I_{cw}] (kA rms) 1sec.	120		120		135	
■ OUTLINE DIMENSION						
	a	799	1034	799	1034	799
	b	460		460		460
	c	380		380		380
	d	60		60		60



Outline Dimensions

AR650S, AR663S



 **TERASAKI ELECTRIC CO., LTD.**

Circuit Breaker Division : 7-2-10 Kamihigashi, Hiranoku, Osaka, JAPAN
 Telephone : 81-6-6791-9323 / Fax : 81-6-6791-9274
 E-mail : int-sales@terasaki.co.jp
 http://www.terasaki.co.jp/